

Dudley Farm Journal

Note from the CSO President:

First - best wishes to all for the New Year.

This year promises to be a very busy one for the Park Staff and CSO with a number of events and activities planned. The next two major events are Plow Days and Antique Tractor & Car Day. Additionally each month there will be Kids Day on the second Saturday and on the third Saturday speakers hosted by the CSO. Please check the calendar of events on our new website for more details.

With the beginning of a new year it is also time to renew your CSO membership. Please drop off your renewal payment at the office or mail it to the Park, care of the Friends of Dudley Farm.

When you next see Gloria Hughes please congratulate her - she is now a member of the CSO Board of Directors. This is in addition to her work on the Publicity Committee, the new Event Tent Committee, and at the Commissary.

As a result of the new State law relating to CSO's the Park Service has drafted a new agreement and CSO Handbook. The proposed agreement will be discussed and voted on at the February meeting the Board of Directors. This proposed agreement will be circulated to the officers and Board members within the next week. If you would like a copy please let me know, and as always you are welcome to attend the Board meeting.

Later in the Journal is a section listing some of those who have recently helped the CSO and in turn the Park in a variety of ways. In the event you happen to speak to any of the people listed please add your thanks for what they have done.

See you at the Park,

Art Wade

Thank You to Cane Day Contributors!!!

Monette Thomas

Capital City Bank

Publix Supermarket

Alachua Farm Bureau

Hitchcock's Markets

Like Dudley Farm on FaceBook!!!

MISSION STATEMENT

OUR MISSION IS TO ENHANCE THE VISITOR EXPERIENCE THROUGH SUPPORTING PRESERVATION, AND THROUGH EDUCATION AT DUDLEY FARM HISTORIC STATE PARK, A ONE OF A KIND LATE 1800' S FARM

FRIENDS OF DUDLEY FARM, CSO MEMBERSHIP BONUS

As you read the item "Membership Bonus" on page 7 of the last Journal you must have been thinking, as I was, what a wonderfully generous gift this man is offering to help encourage membership in our CSO. And that is exactly who and what Jim Notestein is, a generous, encouraging and uplifting person who loves nature and strives to preserve and enhance our environment.

I had the pleasure of accompanying one of our members as she took her membership card to the "ONE OF A KIND PLANTS" nursery where we were greeted by Jim with a big smile and friendly manner. He is delightful!

Jim took us on a tour of his extensive garden (after giving us each a 'shopping' bag). He introduced us to plants both native and from far away places. His knowledge of every-thing that grows is amazing and his nursery is unique and fantastic. We were introduced to plants, trees and shrubs we didn't know existed. The many citrus trees throughout the yard were laden with fruit and he filled the bags we carried. I ate some of that sweet fruit on the spot. Yummy!!

We left Jim's property with two bags of citrus and our member came home with two interesting, healthy and beautiful plants. He made sure that she had both the common and botanical names of her plants along with planting and care instructions.

This was a wonderful experience and we both vowed to return. We will cherish the memory of that visit and encourage others, especially our member to visit Jim Notestein and his nursery. We learned so much from this interesting and creative man and the "gift plants" will be appreciated for many years to come.

If you'd like to receive a plant, call 372-2107 for an appointment. By appointment only!

See the website for information on plants available: www.southerngardening.org

~Gloria Hughes~

Dudley Farm Wish List We are in need of:

Fertilizer (bags are good) for the crops and garden.

A small refrigerator, dorm size. For the Cane Complex.

Large rain barrels (3), the old barrels are breaking down.

A secure / tight storage shed. For lots of uses.

A wagon or carriage to be pulled by the equine.

Thank you ~ we are grateful!

The Marion County Rose Society ~ a monetary donation.

Kevin & Tammie Coleman, of Newberry ~ 50 rolls of hay.

John Shoemyen ~ 2 yr. rental of a climate controlled storage unit.

John Swansen ~ plants remaining after sale at Cane Day.

Amber Jordan, Whisteria Valley Soap ~ bars of goat milk soap.

Pam Perry ~ cloth bags to enhance the bars of soap for sale and for the many projects she

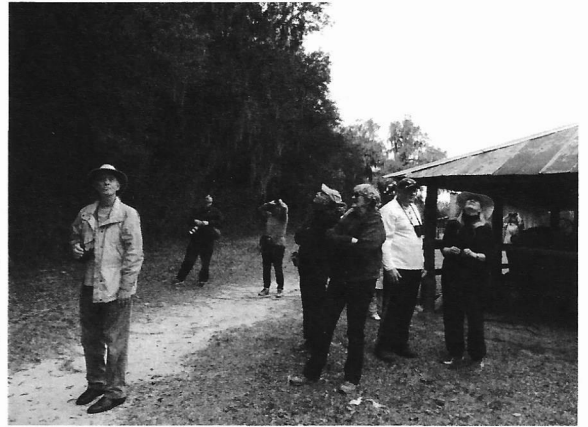
accomplished for the CSO.

Gator Whittlers ~ carved items for sale at Commissary.

The Domestic Skills Group ~ handmade items for Commissary.

First Day Hike

On New Year's Day many of Florida's state parks participated in the First Day Hikes events. Dudley Farm actually had two hikes. The first was a birding tour led by Ann Casella, the president of the Alachua Audubon Soc. There were 25 intrepid hikers with binoculars and cameras, walking with eyes focused on the trees of the Pause & Ponder Trail. We then walked along the woods east of the parking lot north to the Hodge barn and then up to the sugar cane field. Many birds such as the eastern phoebe, ruby-crowned kinglet, cedar waxwing and kestrel were seen. For a total look at all 23 species we found see: <http://www.friendsofdudleyfarm.org/about-dudley-farm/photo-gallery/category-9>



Also we were fortunate to have an article written in the Gainesville Sun about the birding hike: <http://www.gainesville.com/article/20150101/ARTICLES/150109992/0/search>

Our second hike for the New Year was a hands on 'Become a Junior Ranger' workbook followed by a nature trek on the Pause and Ponder! A total of 8 girls, and boys became Jr. Rangers that day! After taking the Jr. Ranger pledge, and pinning on their Jr. Ranger badge - into the woods we went! Clutching our trusty cameras, and treasure hunt sheets, the children were off. So many treasures were found! Saw palmettos, a bird flying, a pine tree, a live oak; is that a sink hole? That's a beauty berry, here is a magnolia! Logs were turned over, and insects were looked at.

Over all, we had two wonderful 1st day hikes at Dudley Farm!

Irma & Sandra

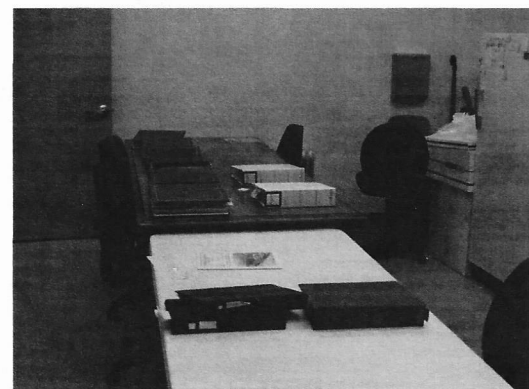
Collections Update

By Bennett Lloyd

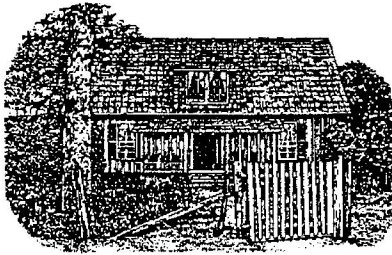
Over the past few months the collections team has been hard at work accessioning objects, and repairing and consolidating our current database. As of the New Year this has been helped immensely by the acquisition of a new computer, thanks to Jim Dresser, Art Wade, and our park CSO. This new machine allowed us to network our two collections stations so they share a common database, thereby increasing the speed and efficiency of work and preventing duplication errors which sneaked into earlier efforts. Its higher processing power will also allow us to scan and accession items simultaneously. We have most recently completed the importation of an inventory spreadsheet from Tallahassee comprising over 6,000 Dudley items into Past Perfect, our collections tracking software. In addition we are now digitizing research material compiled from after the park's acquisition in the form of student theses, archaeological surveys, aerial photographs, and the like. All of these efforts would be impossible without the aid of our tireless collections volunteers, who have my immeasurable gratitude: **Bob, Vada, Becky, Mary Ann, Kristen, and Anne.**



The Collections Building



Page From the Past—December 1998



Letters from home . . .

By Sally Morrison

Sweet 'Taters

Miss Myrtle sat on the porch and chatted, back in '83, about this 'n that, as she often did. That afternoon we got on to the subject of 'taters and Miss Myrtle recounted that the Dudley's always used to plant 4-6 acres of sweet 'taters each year and hauled in the harvest by the two-horse wagon load. They even built a sweet 'tater house, half-sunk into the ground, to store the 'taters in over the winter. The 'taters were set on straw and the low, rock-walled, steep-roofed 'tater house kept them from frost and heat.

This year, 'taters found their way back into the soil of Dudley Farm. Hubert Davis provided the cut vines for 300 plants — and the expertise on how to grow them. He even whittled the sticks for setting the vines into the soil. We hand-watered two times, to get them started, and then the sturdy vines rooted and set off on their own. The lavender morning glory-like flowers bloomed through summer heat and the long drought.

Three months later, Muley Pete pulled the plow through the 'tater patch as Jerry Hudson, Morgan Tyrone, Terry Nail, and Americorps volunteer Jason harvested the sweet 'taters into bushel baskets.

The 'taters are now curing and sweetening. Shirley Smith has plans to make candied yams for the Cane Day dinner.



Common Yam (*Dioscorea sativa*).

Sally



Submitted by: Sandy "Rooster" Huff, Secretary "Gator Whittlers" Whittling/Woodcarving Club

Hello "Friends of Dudley Farm"!! This is the first article submitted by the "**Gator Whittlers" Whittling/Woodcarving Club** for the "Friends of Dudley Farm Journal" and, as an 'Organization' [and Individual Family member] member for the past two years is it a pleasure to be asked to submit an article.

One of our whittling Club's first days of volunteering at the "Farm" was on a "Kid's Day" in 2013. Since that time we have tried to have a group from our Club participate at the monthly "Kid's Days" and other special events. This has proved to be very rewarding to our Club members who participate and the response from the "kids", their parents and other visitors to the

'Farm' has been overwhelming. That makes our participation that much more enjoyable and fulfilling and we look forward to continuing volunteering not only at "Kid's Day" but other special events at the "Farm". A number of our members have carved 'Comfort Birds' and wooden spoons and donated them to sell at the 'Commissary' to help raise funds for new projects at the "Farm" and to help with farm maintenance costs.

Our "Gator Whittlers" Club began in January 2013 and we meet weekly at the Senior Recreation Center on NW 34th Blvd. across from the new WalMart Supercenter. Our Club was basically a

'rejuvenation' of the former "Hogtown Whittlers" who for years met at locations in Gainesville and later at the Westside Park in Gainesville. We meet every Thursday morning from 9a-noon. There is no charge for membership and we always enjoy new members coming into our Club. You don't have to be an experienced woodcarver to join. We have members who have never whittled/carved in their lives and others who have various levels of woodcarving skills. Our instructors are Lee Crews, Frits Klaassen and Roger Cox. We are a fun group and there's always a member ready and willing to help with tips on how to do different types of whittling/woodcarving. We can furnish you the wood for carving, all we ask is that you bring your own carving tools. We can supply you with good sources of quality carving tools should you need to purchase them.

We currently have approximately 45 members in our Club. Yours truly, the Secretary, tries to make sure we have a pot of hot coffee ready by meeting time each week. Usually some member(s) brings in pastries, donuts, etc. each week for snacks. The only request is for

voluntary donations each week for the coffee supply and condiment funds. We are a 'fun group' and it is a good way to meet new friends and enjoy a great relaxing hobby. We all do various types of carvings and your imagination is unlimited on what you can do with a good sharp knife and a piece of scrap wood.

On another note, thanks to the encouragement of our Treasurer, Jim Dresser, I was introduced to the hobby of 'blacksmithing'. This is an 'art' that almost became non-existent. However, in the past 25-30 years it is rapidly making a comeback not only among the older generation but also teenagers. I joined the Northeast Chapter of the Florida Artist Blacksmith Association [FABA] and attended the annual FABA conference in Ocala last October and took three blacksmith beginner's classes. As a result, it has opened an entire new hobby for me and as a result, I have been volunteering to help man the blacksmith shop at the "Farm". I know my lack of skills at this point in time has about run Jim crazy by 'tolerating' me but he has been a great mentor and I appreciate his being patient with me as I attempt to learn the trade. I recently told my Wife Dorothy that one day I might make something that's recognizable!!! I have a whole new respect for the blacksmith trade as it is a labor intensive job but one that is very rewarding once you make something out of a blank piece of metal and can say, "I made this". Thank you Jim for getting me interested in another hobby.

In closing, I want to thank all the wonderful staff and volunteers at "Dudley Farm Historic State Park" for allowing our Club to be a part of this organization. I have met so many new long lasting friends and I never cease to enjoy each time I volunteer at the "Farm" as does our other Club members do. There are too many to thank individually who have introduced us to the "Farm" and have extended such a warm welcome to our Club members. We look forward to continued volunteering at the "Farm" and we invite anyone who is interested in the exciting hobby of whittling/woodcarving to come visit us at our weekly Club meetings to see what we're all about, talk to our members, ask questions about woodcarving, view his/her projects and join our Club if you so desire, I don't think you'll regret it. You can contact me at (352) 332-0383 or e-mail me at: ergosafety.shuff@yahoo.com. So for now, '

Safe and Happy Whittling'

NOTES FROM THE BOARD MEETING OF DECEMBER 15, 2014

Sandra Cashes, Park Service Specialist reported: Cane Day was a success with 1800 visitors. December's Kids Day was a success too with 66 visitors.

The morning of the 20th volunteers decorated for the holidays using the beautiful greenery and berries provided by nature and available on the farm.

There was a large wedding at the park on 12-13-14. It was beautifully arranged and decorated. The ceremony took place under the large Oak tree and the reception was held in the Event Pavilion. There were 167 guests.

Art Wade, CSO President reported: Artists of the Gainesville Fine Arts Assoc. who participated in the Dudley Paint Out displayed their paintings at the Hippodrome State Theater for almost a month, some paintings sold and the CSO will receive a percentage of those sales. We were all invited to the reception on the closing day of the exhibit. The GFAA will partner with us at some of our activities, they are willing and anxious to help us succeed.

Cane Day discussion: It is vital that we all engage visitors in conversation to welcome and acquaint them with our park and the features of the event. To help to do so the Membership table will be located in a place where most visitors enter. Parking was a problem for part of that day, improvements need to be made with the flow of traffic in and out of the parking field. It would be safer to have exiting vehicles more of a distance from the traffic entering the field. A remedy to alleviate this problem will be decided upon.

Up-coming events: Plow Days - there is difficulty finding plow-men to participate, Sandra hasn't had responses from most that she contacted. Some have sold their teams and there are less participating in this activity. Art asked for ideas, we need plow teams. He has tried to locate oxen and mules as well with no luck. Plow Days are Feb. 6th & 7th.

Recruitment: We must strive to increase our membership! Possibly utilize our pavilion for classroom activities, demonstrations and training involving organizations such as IFAS and the Master Gardener Program. It would be beneficial to have these offerings on this, the west, side of town DFHSP's many native plants, trees and varied landscape might be used as an open-air classroom. Possibly Home School groups would hold classes on history or public speaking, etc. Ideas are needed! The pavilion will accommodate lots of activities, i.e. meetings, classes, demonstrations and parties too.

Norm Tankersly, Commissary, reported: Volunteers are needed to keep the store open. On Cane Day we didn't have enough sales help. Cane Day brought in approx. \$3200. to support the park. Prices must be increased on some items ~ t-shirts will go from \$12 to \$14, the XX size to \$15. Jams and jellies are the best sellers. The Domestic Skills Group supplies us with wonderful handmade items that sell very well. The Whittlers are a great addition to our park! They made "Comfort Birds" and donated 40, we've sold 20 so far at \$10. ea. that's great! Amber Jordan, donated goat milk soap which is selling very well. Pan Perry, resident volunteer, made pretty cloth bags as an enhancement for the soap bars. The oranges and grapefruit from the farm's trees sell very well. Sweet potatoes and all of the garden produce sell well. **WE NEED COMMISSARY KEEPERS!**

Gloria Hughes, Publicity: The Alligator newspaper had a great article on our Cane Day. Our Town magazines carries all of our PSA's in their complete form, its editor, Albert Isaac, has been a good friend to DFHSP with many articles about the park and our events. The Dec. Ocala Good Life Magazine had a great article with pictures about the park on Quilt Day. The LifeSouth Blood Bank annual event,

.(Board Meeting Con't.) Operation Santa Delivery, was a great opportunity to network. Publicity is doing well and doing its thing.

Jim Dresser, Treasurer: The purchase of a new computer and monitor, cost of \$600, for the Collections Building had been approved at the last meeting. To eliminate the difficulty transitioning to Windows 8, the Collections committee requested the new computer have Windows 7. Therefore, there will be a cost increase. A vote was taken and \$200. was added to cover these changes.

The Event Pavilion: To decide on the price we charge to rent the tent, a lengthy discussion ensued. Material for the floor of the tent and the paths need to be decided on and lighting for the paths and tent is a priority. A series of issues need to be covered, we are not yet prepared. Rental pricing was discussed and it was decided that for now \$250. will be charged. The price will rise as improvements are made. Renters will pay the park service as per its formal contract and pay the CSO for use of the pavilion. Whether members, non-profits, certain organizations etc. will be granted a discount needs further discussion.

These are not official minutes of the meeting, just my notes to inform you of some of what the Board is doing on your behalf. It would be great if you would attend these important meeting where decisions are made. **G**

OPERATION SANTA DELIVERY

Life South Blood Bank offers an annual event for all children throughout the area.

Vendors, community service organizations and local non-profits are invited to participate. This year we, The Friends of Dudley Farm, were invited to participate and we were glad to accept the invitation. This years event was held on December 13th.

Being none of us have young children, we knew nothing about this event. I packed up toys and games from our Commissary that I thought would entertain the children, Gayle Ambrose agreed to demonstrate her unique crochet technique while in period costume and Lorraine McDowell offered to teach children how to create baskets from palmetto palm fronds (these ladies with their crafts attract lots of interest).

The weather was perfect, there were hundreds of children having fun in the large field of Santa Fe College among the well organized 'vendors'. It was great! It really surprised me that the modern children were interested in and fascinated by the old timey toys and games, we often heard "WOW!" as a youngster tried one of our toys. Many parents were just as fascinated as their children. It was difficult to get those playing with the corncob-turkey feather spinners to share with others who wanted to join in on the fun. A great time was had by all! And, everyone stopped and watched, at noon, when Santa himself was delivered via a Shands helicopter, so exciting! Santa was escorted to his special tent where on his throne he met children who shared their wishes for Christmas. I wanted to have my picture taken with him but I was too busy and he had to get back to work too at the North Pole.

This event afforded us great exposure, we did a lot of talking about DFHSP and about it's monthly Kids Day events. It was great publicity, good networking and fun too! We are looking forward to participating again next year at this wonderful event. ~ Gloria Hughes ~

Our Vision Statement

Dudley Farm Historic State Park Preserved for the Appreciation of Future Generations

We're on the Web: <http://www.floridastateparks.org/dudleyfarm/>

Friends of Dudley Web Site: <http://www.friendsofdudleyfarm.org/>

Board of Directors:

President: **Art Wade** 352-278-6399
1st. Vic President: Norm Tankersley 352-363-0918
Treasurer: Jim Dresser 386-454-2462
Secretary: Archie & Emelie Matthews 386-462-3016
Board Members:
Stephanie Barsch: 352-256-1187 Irma Riley: 352-371-9070
Susan McNulty: 352-453-8822 Jim Dekle: 352-472-3443
Gayle Ambrose: 352-378-7507 Ann West: 352-339-5706
Lorraine McDowell: 352-495-2953 Gloria Hughes: 352-474-6442

Committees Chairmen:

Collections: Bob Spangenberg 352-374-4902
Commissary: Norm Tankersley 352-363-0918
Keepers coordinator: Ann West 352-339-5706
Membership: Anne Hair 352-472-3540
" Co-chair Becky Dean 352-462-3260
Journal Publisher: Linda Rengarts 352-641-6225
Webmaster: Irma Riley 352-371-9070
Publicity: Gloria Hughes 352-474-6442

Dudley Farm Phone #:

352-472-1142

Up-Coming Events:

Inkle Loom Weaving-Jan. 28th

Chair Caning-Feb. 4th

Plow Days — Feb. 6th & 7th

**Dudley Kids Day-Feb. 14th "Chickens
Galore**

Bargello (needlepoint)-March 4th

Kids Day-March 14th "Beautiful Eggs"

Antique Tractor & Car Day-March 21st

Earth Day-April 25th'

**Kids Day-April 11th & 12th "Partake of
the Past"**

Friends of Dudley Farm, Inc.
18730 W. Newberry Road
Newberry, FL 32669